 3D PRINTER	DATE: 11/03/17 PAGES: 11	FILE NAME: OQD08001.doc REVISION : A
TITLE: How to cut off the backlight of LCD display and replace LCD display?	INITIATE BY: Manolo Chen APPROVED BY: Gary Chen	

1.0 Purpose

To avoid damage of LCD display. Wanhao sent the LCD display with the backlight panel on in first batch LCD display(Shipment in Feb 2017). And this file would instruct how to take off the backlight of LCD and replace the old one.

2.0 Scope

This document cover Duplicator 7.

3.0 Tools required.

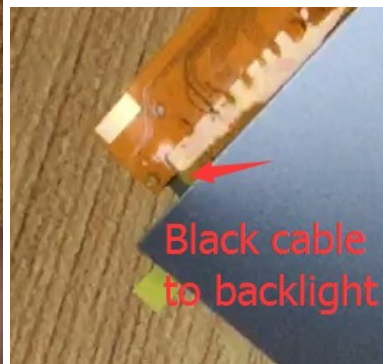
One Scissors,



4.0 How to cut the backlight panel cable.

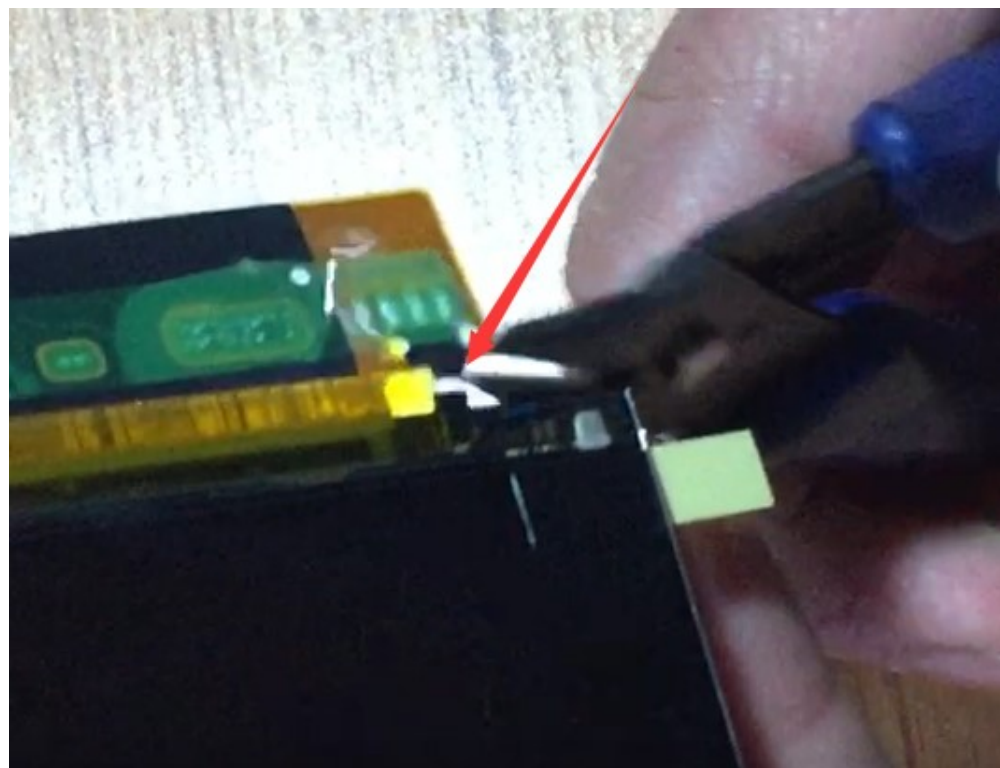
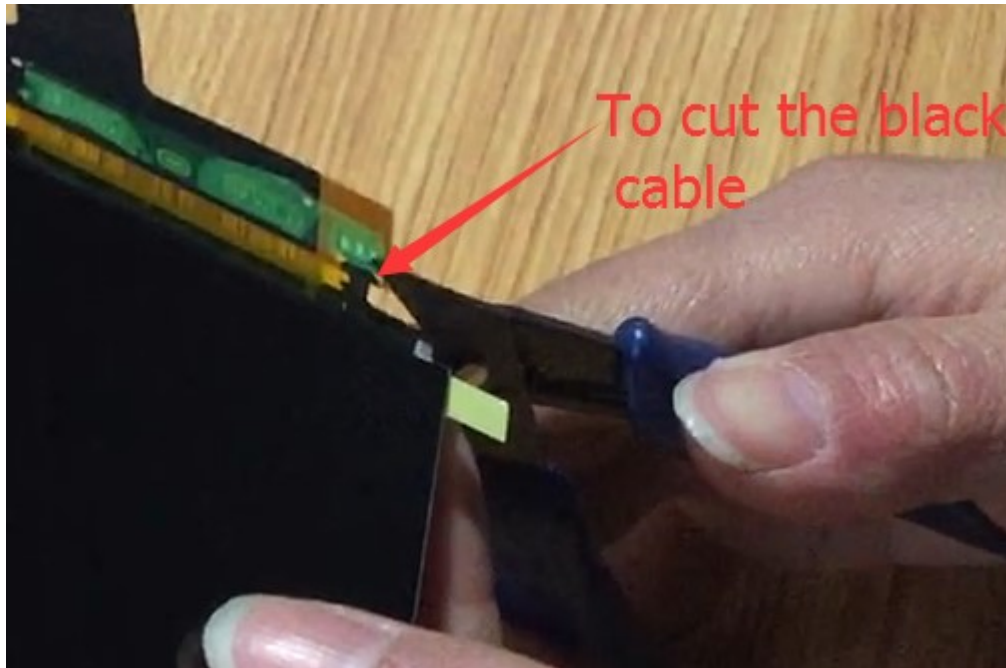
4.1 Find the backlight panel and black cable to the backlight.

The backlight mirror is at back of the LCD display. On the one end of the series cable, there is one black color cable which is connected to the backlight panel.



4.2 To cut the black cable

To hold the LCD display firmly and cut the cable gently.



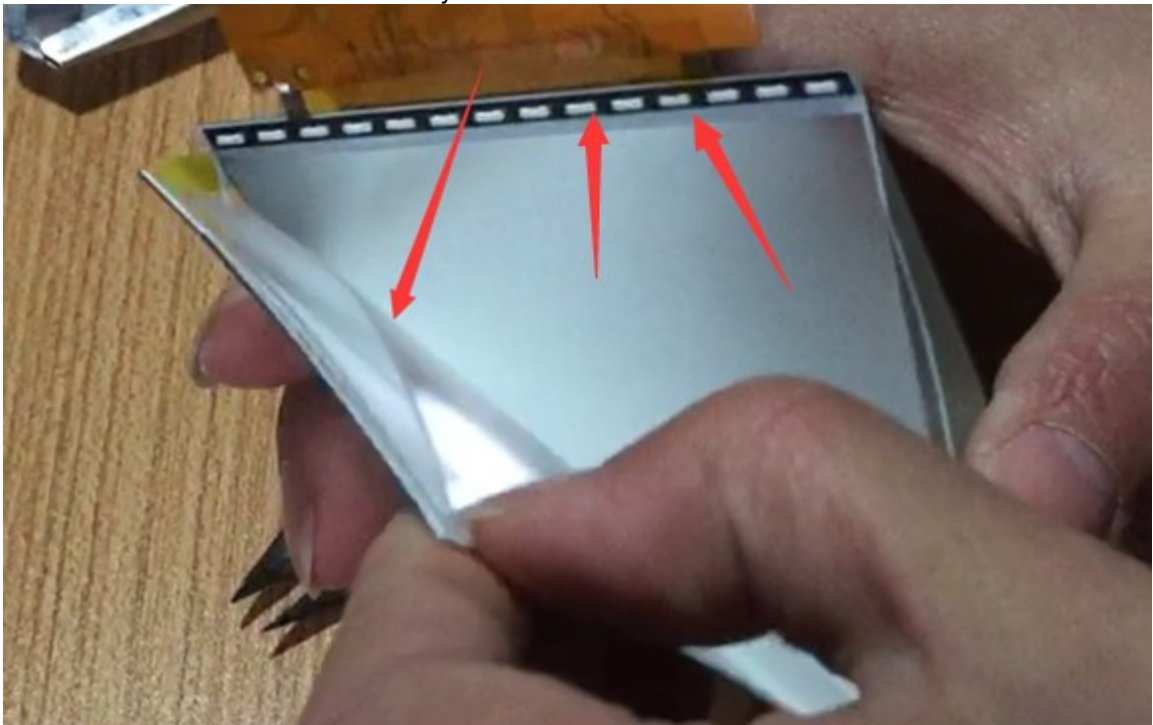
Note: Please cut the black cable only. :

4.0 To tear off the backlight panel.

The LCD is made of glass and the rest backlight panel is made of foam like material. To use your nail to separate the foam material off the glass gently.



There would be one mirror like film layer still seal to the LCD.



To tear this film off the LCD

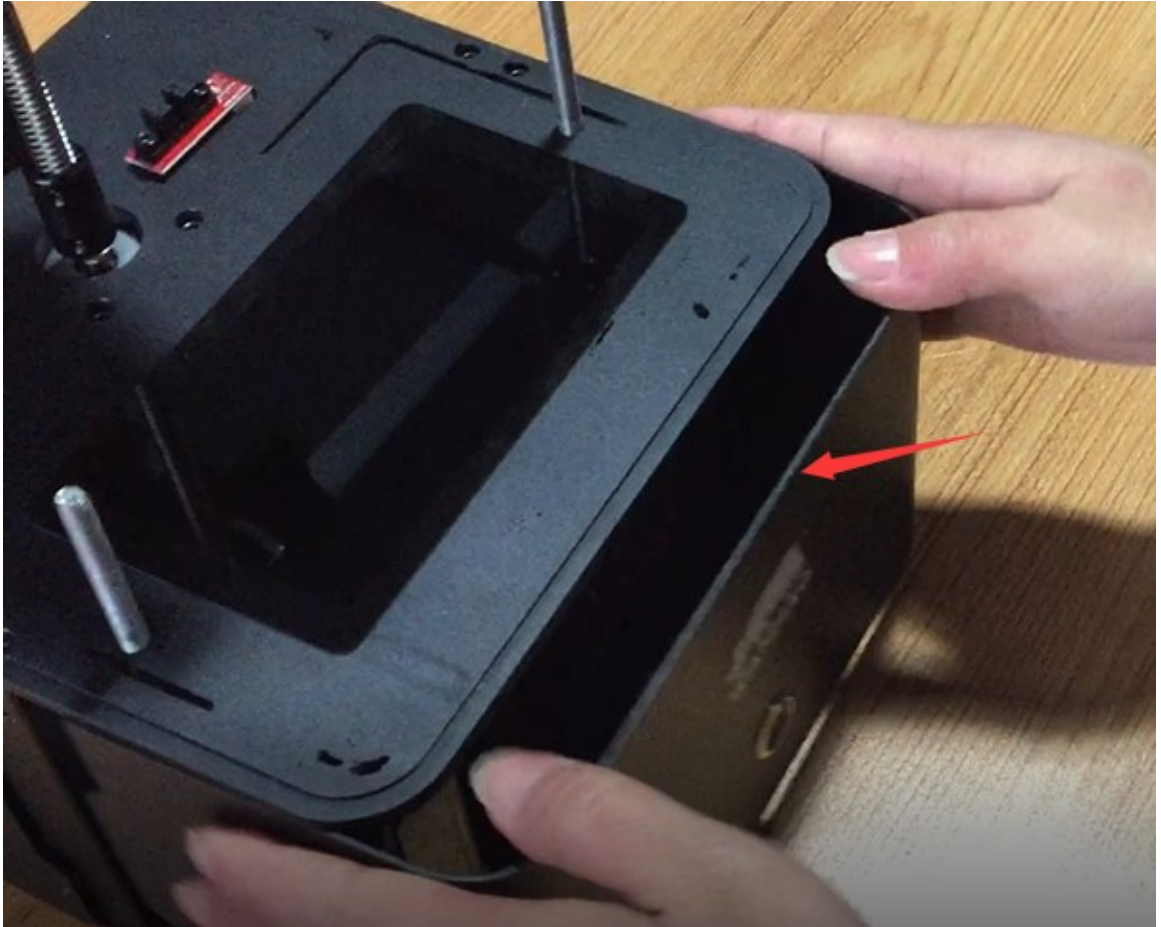


All the white seal would be tear off when you peel off the mirror film. And only the LCD glass left.



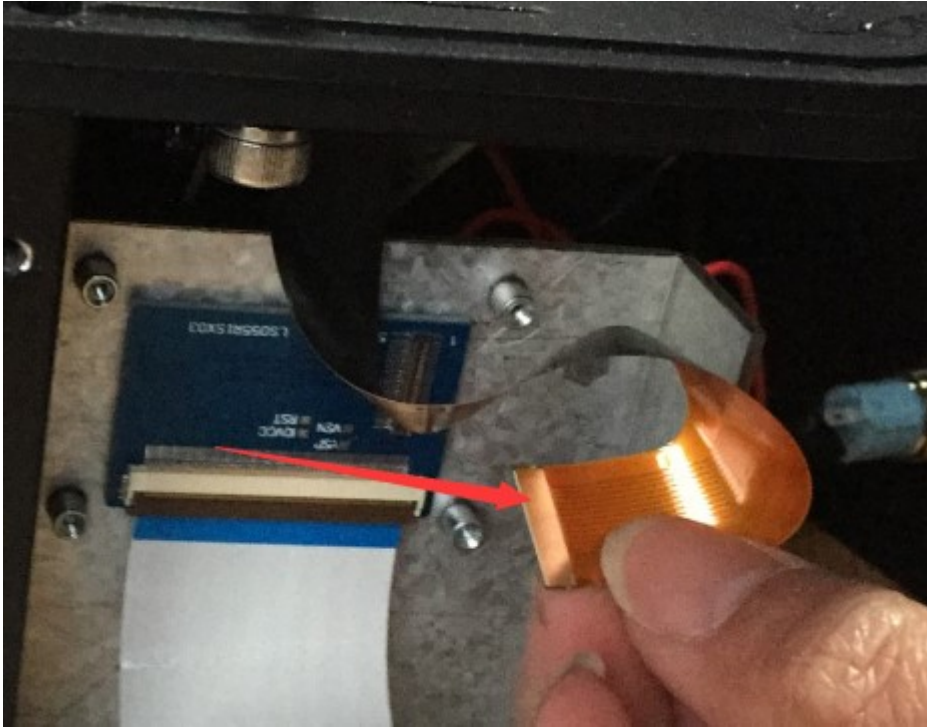
5.0 To replace the old LCD display

5.1 Screw off the bolts so you can remove the front cover of printer.

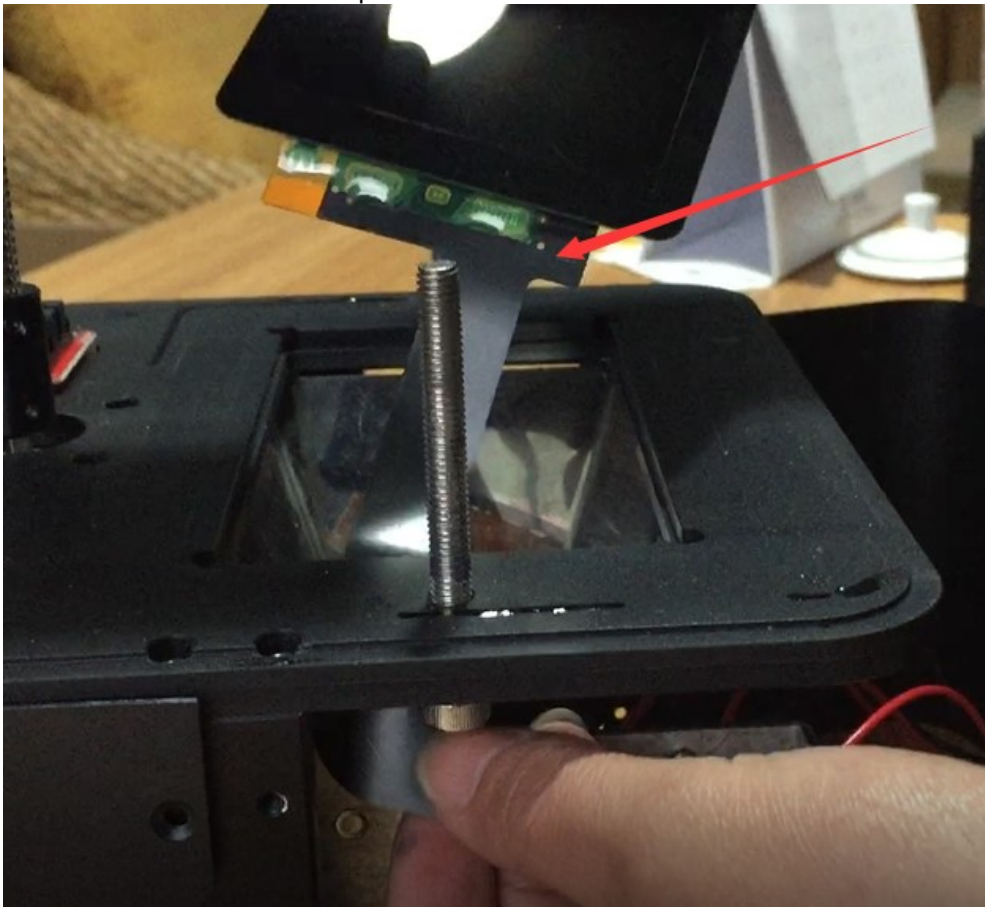


5.2 Disconnect the golden series cable by pull it off the socket.

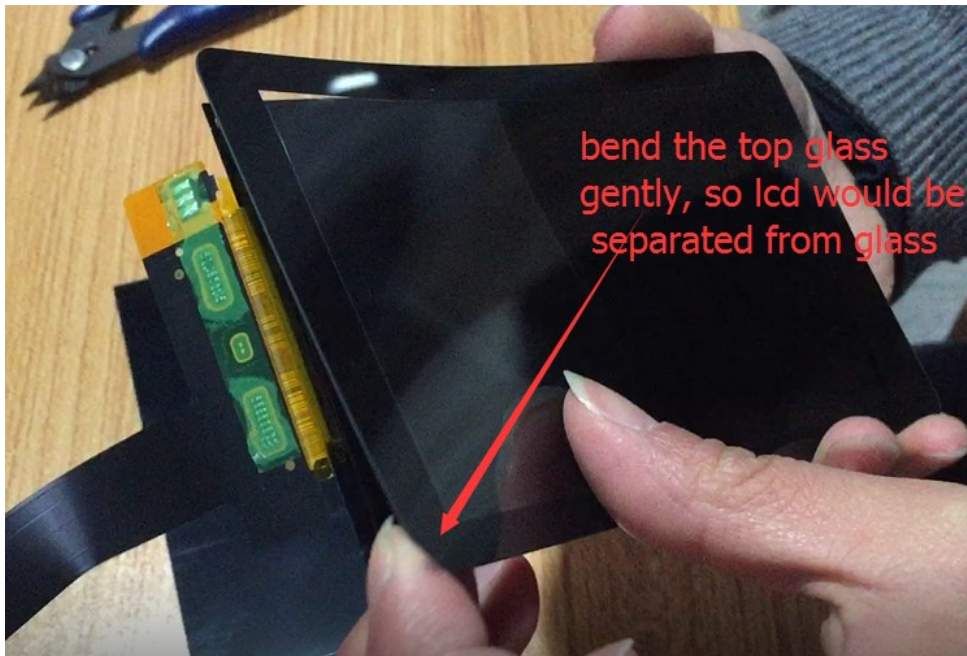




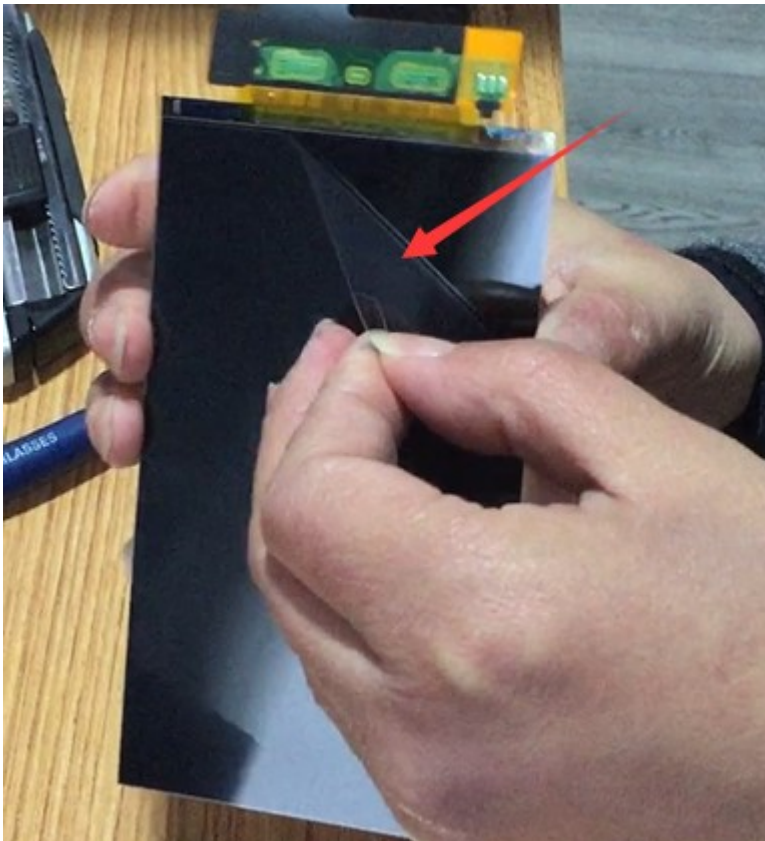
5.3 to Pull the old LCD off the printer.



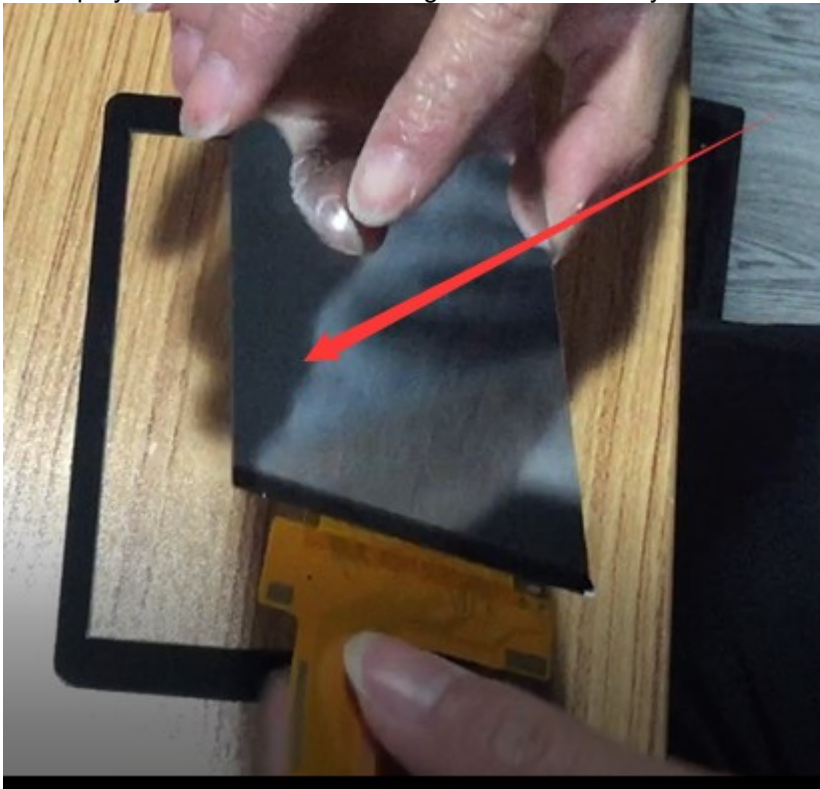
5.4 to bend the glass gently, so you can separate the glass and LCD display.



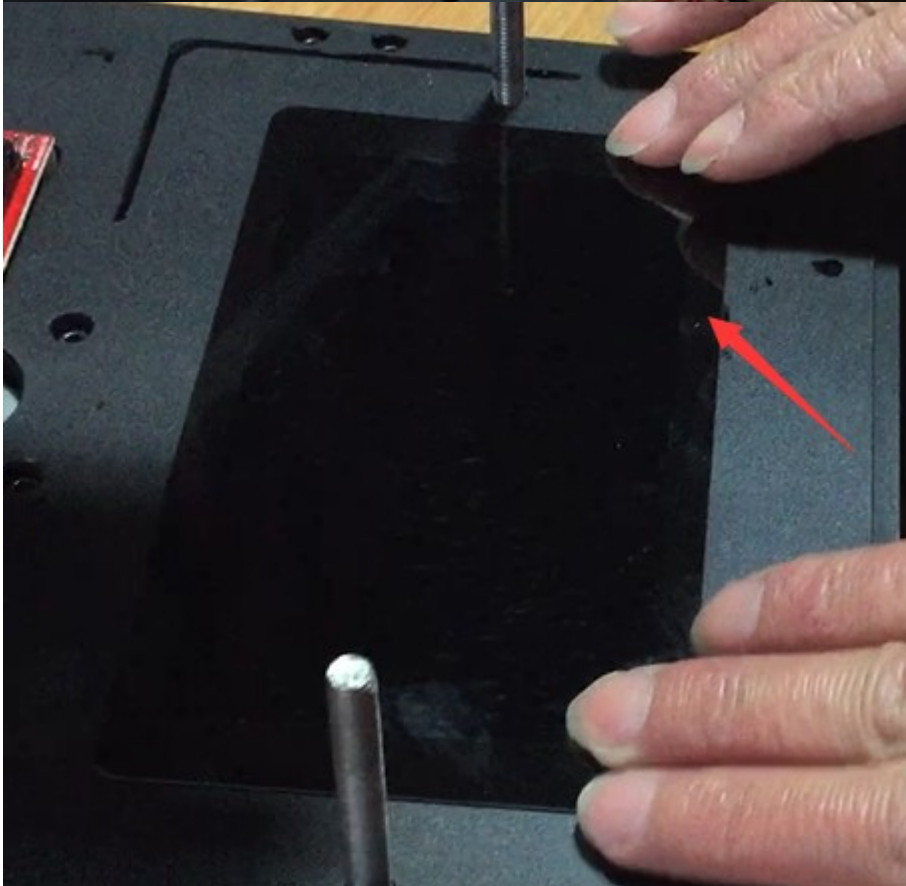
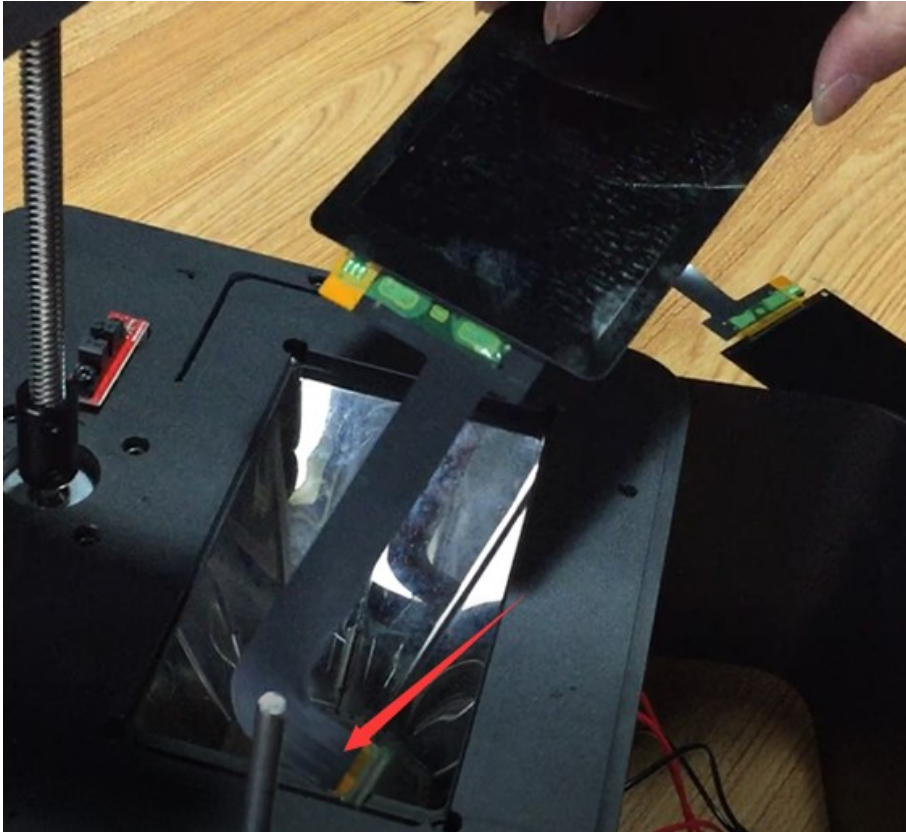
5.5 To tear off the protection film from the lcd display.



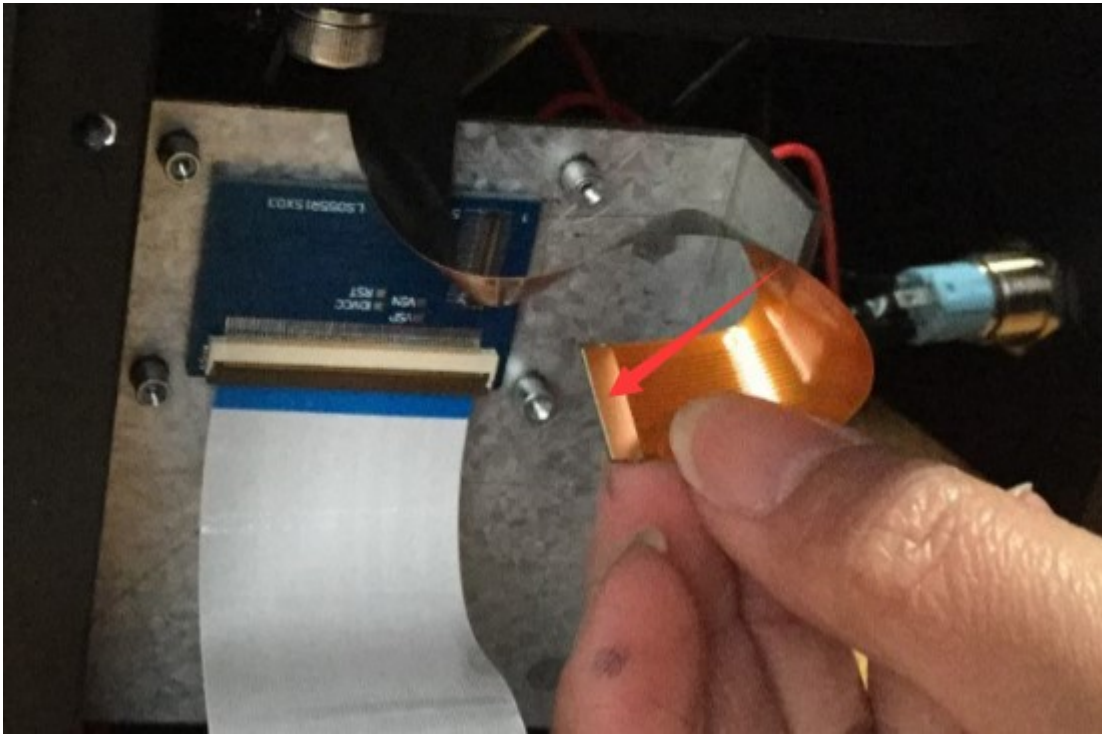
5.5 Sticking this glass onto the new LCD display. Once you put the cover glass onto the LCD display. The 2 would combine together automatically.



5.6 Re-insert the series cable into the printer slot. And secure the top glass onto printer.



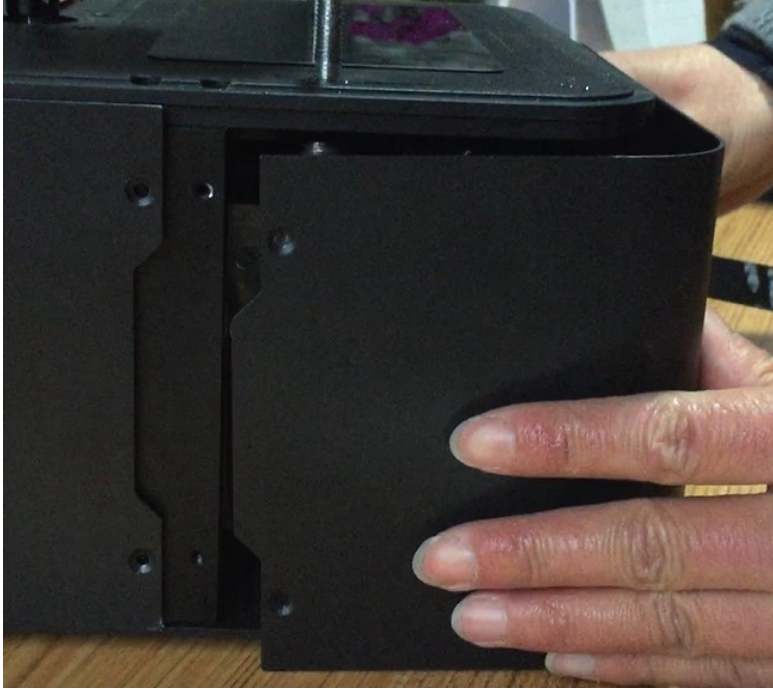
5.7 re-insert the series cable into the socket.



Note: Make sure the plain shining copper side is toward you. Black side is in-visible.



5.8 Re-screw the front cover.



5.0 Revisions

A – Initiate: 12/3/17 by: Manolo