

THE DIFFERENCE BETWEEN WANHAO D7 V1.4 AND WANHAO D7 V1.5



D7 V1.4

UPGRADE 



D7 V1.5



BUILDING PLATE WITH FULL COATING
REDUCE THE SURFACE STICKING ABILITY



BY FINE MACHINING AND GRINDING, THE
SURFACE WITH ABRASIVE EFFECT ENABLE
BETTER STICKING ON ALUMINUM PLATE.



FOR TALL PRINTS, SINGLE RAIL DESIGN REFLECT
THE Z AXIS WOBBLE ISSUE GREATLY. SLIGHTLY
Z WOBBLE WOULD SHOW ON PRINTS.



1. DOUBLE RAIL DESIGN REDUCE THE WOBBLE ISSUE
HUGELY. 2. RAIL BAR PROVIDE STRONG STRENGTH TO
ABSORB WOBBING STRENGTH AND MAKE ALL
PRINTS STRAIGHT AND CHARM



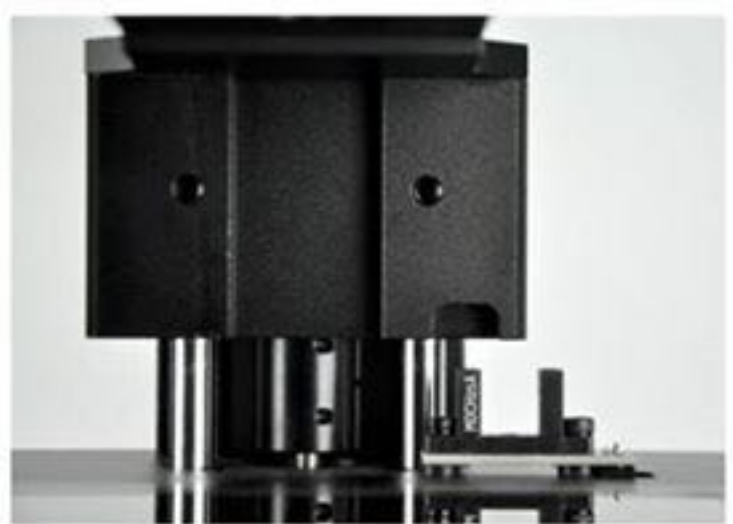
METAL SHEET Z AXIS COMPOUND



FULL Z AXIS ALUMINUM BLOCK PROVIDE
BETTER MECHANICAL STRENGTH AND LINEAR WAY



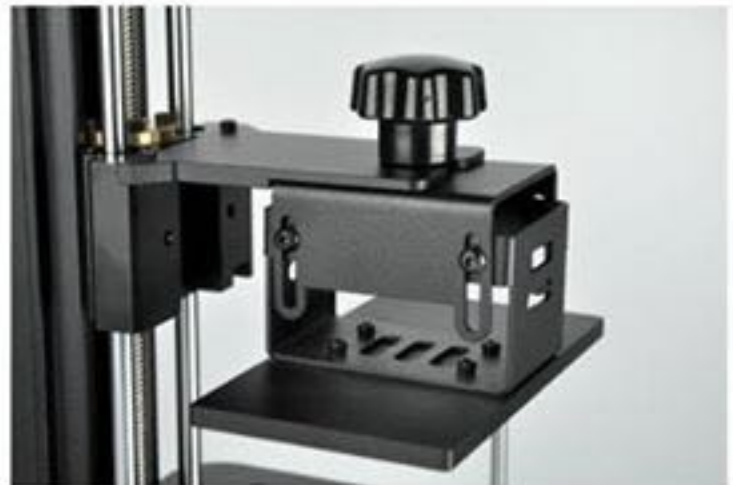
PLATE TRIGGER



MACHINED CONCAVE TRIGGER POINT PROVIDE MORE PRECISE Z AXIS STOP, AND PROVIDE BETTER PROTECTION ON LCD DISPLAY, EVEN IF THE Z SWITCH FAILED.



TO MOUNT THE BUILDING PLATE ONTO LOCKING HOLE, MAY GET ANGLE WITH LCD DISPLAY.



THE STOP LINE WOULD MAKE BUILDING PLATE AMOUNTING 100% CORRECT. NO ANGLE BETWEEN LCD DISPLAY AND BUILDING PLATE



STANDARD LOCKING SYSTEM



NEW SQUARE TOP ANTI WOBBLE DESIGN PROVIDE STRONGER TRIANGLE SECURE STRENGTH. LESS WOBBLE ISSUE