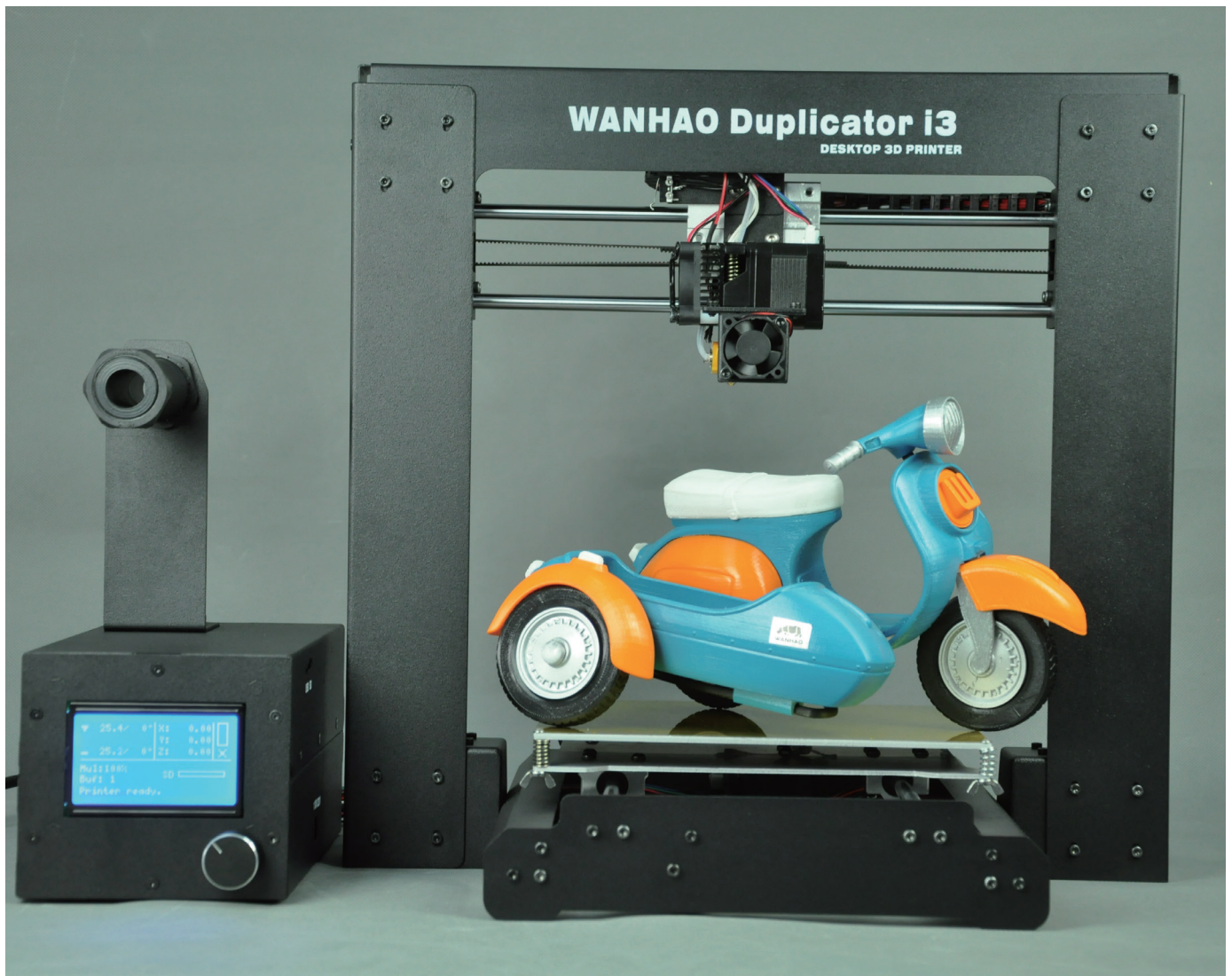


# WANHAO i3 UNBOXING AND HARDWARE SET UP

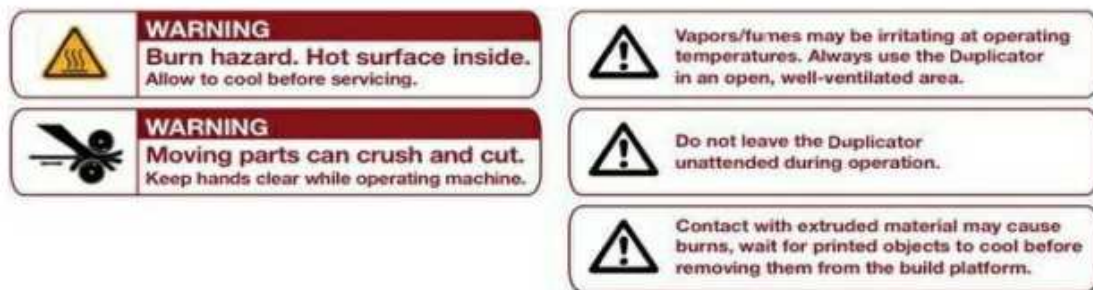


# Unboxing and Hardware Setup

We packaged your Duplicator i3 very carefully at the Wanhao Bot cave -- we hope you'll read this guide and be just as careful unpacking it. In fact, you should always be really careful with The Duplicator i3. Here are a few things to keep in mind.

## Safety Information

1.1 Caution: The Duplicator i3 generates high temperatures and includes moving parts that can cause injury. Never reach inside The Duplicator i3 while it is in operation, and allow time for The Duplicator i3 to cool down after operation.



The Duplicator i3 is sensitive to electrostatic discharge. Make sure you don't have a static charge on you by touching a grounded

object before operating The Duplicator i3 or attempting any adjustments. If opening The Duplicator i3 for service, ensure that the power supply is turned off and the cord is disconnected.

## Package Contents

Here are the items that should be found in the Duplicator i3 package:

- The Duplicator i3
- Single Step extruder MK10
- 1x spool holder
- Hex Wrench and bolt Kit
- 1 x SD card
- 2 x Wanhao platform tape
- 10 meters PLA filament
- 1 x Power supply cable
- 1 x USB A to B cable
- 1 x filament stand



## Unboxing

2.1 The Duplicator i3 is packed very tightly and carefully -- take your time unpacking it. In this section, the names of important parts of the machine will be in bold type.



**Do not force or tear anything out of place—  
you may damage your Duplicator.**

First, place The Duplicator i3's box on the work table next to a clean, flat work space. Open from the up side. Cut the plastic bag. So you can clear all the protection foam and cut all the white secure ribbons.

1. Cut the ribbon



2. Get the spare parts box out



3. Take the foam out



4. Take off the box





5. Put the Base onto a table or floor. Never drag the black cable.



6. Put the control box onto table or floor.



7. Stand the tower on the table.



8. Cut the white secure ribbon.



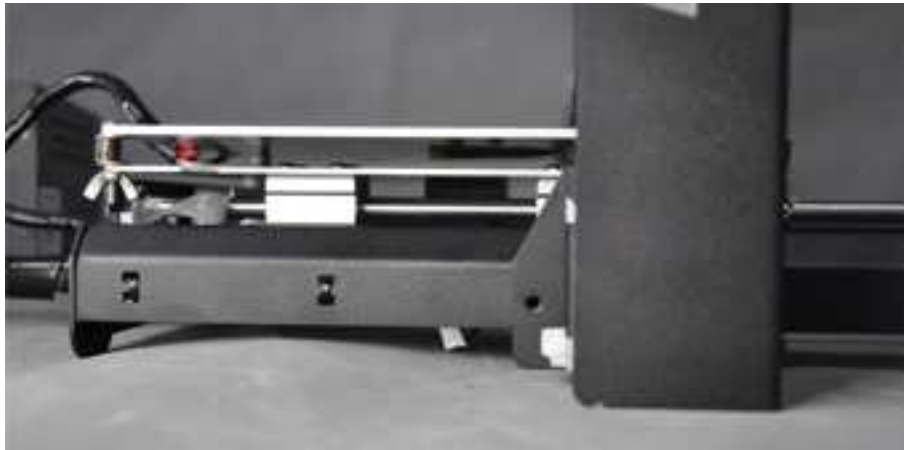
9. Raise the right X axis manually.



10. Raise the left axis manually.



11. Insert the Base into the tower and match the bolt hole.



12. Lock the 2 bolts on left, right side.



13. Turn printer aside, Lock extra 2 bolts inside base 14. Lock the left motor cable



15. Cut the black ribbon

16. Short cable for Z; Long for X, black for end stop switch



17. Insert longest into the X axis motor. 18. Insert the drag Chain into socket



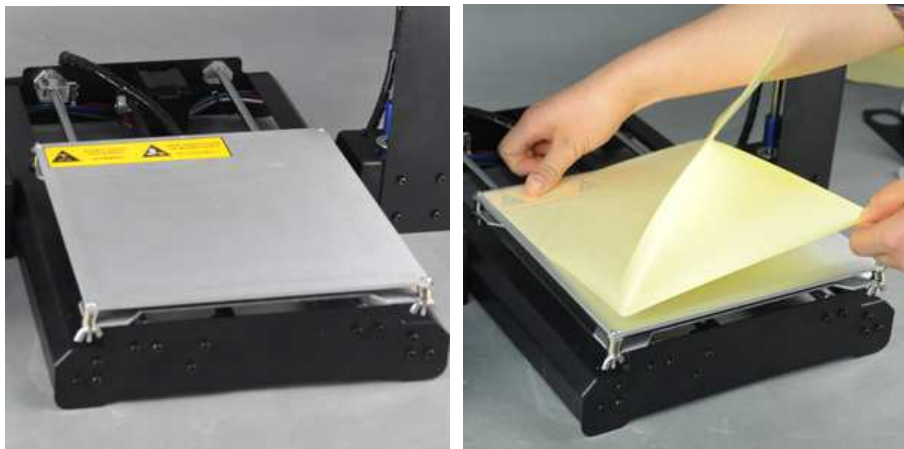
**Note: the black cable is not a handle! Never lift The Duplicator i3 by the black cable 2.3**



. Gently pull The Duplicator i3 out of its packaging and place it on your work surface.2.4

In the packaging underneath your Duplicator i3 you'll find the Power cable, as well as your USB A to B cable and Filament. Take these out and put them aside.

You should be able to see the build platform: it's an aluminum plate. Tear off one Wanhao Masking tape to cover the plate.



You have now finished unpacking your Duplicator i3! We're really proud of it! Also, we recommend that you keep the box that it was shipped in for future transport and long-term storage.

### **The Duplicator i3 Diagram**

Before we continue, let's familiarize ourselves with some of the main features of The Wanhao Duplicator i3.

#### **3.1 Front:**

1. Step extruder MK10
2. Build Platform

3. LCD Interface Panel
5. SD Card slot (on side panel)

### 3.2 Back and side:

6. Power switch ( 110V or 220V )
7. Power input
8. USB cable input
9. spool holder



### Initial Hardware Setup.

Now, set the Spool holder on the control box. Insert 2 screws through the 2 holes of **spool holder stand**. Lock the 2 screws onto the stand. Then insert the filament spool holder through the stand hole and lock it by 2 plastic nuts.



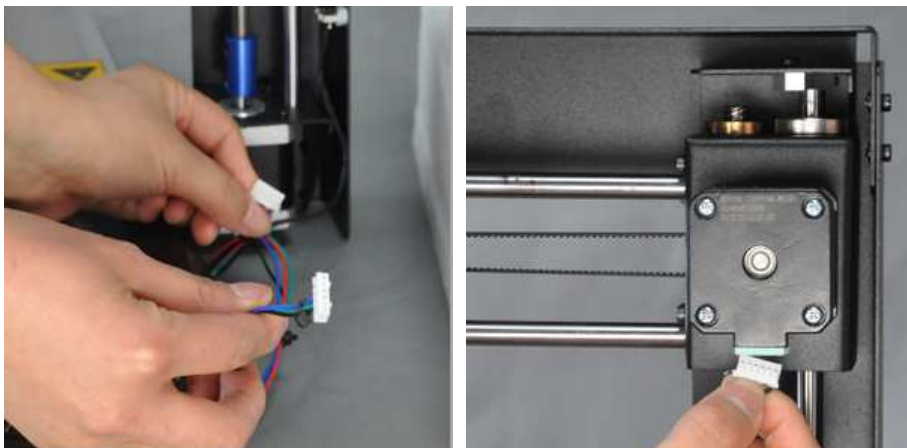


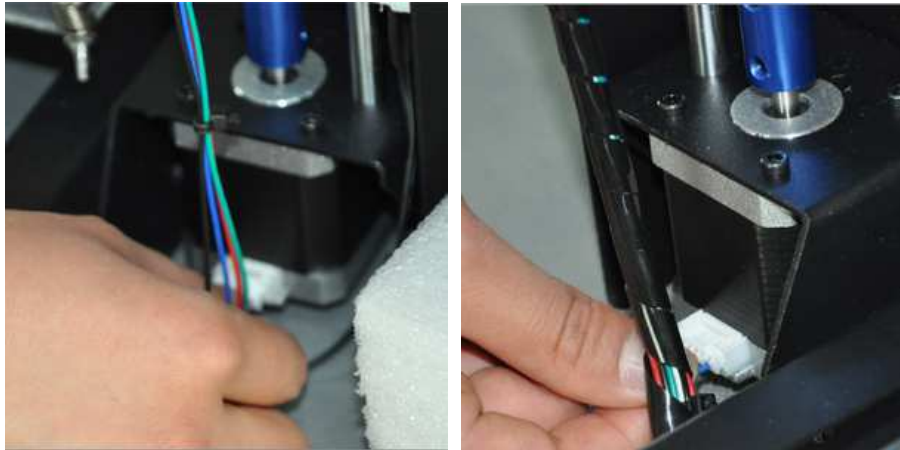


Almost finished! Check your Power Supply power switch. There are 2 **voltage option, 110V and 220V**. Make sure you are setting the switch at right voltage according to your local power supply voltage. 4.6 Note: this is a 2 voltage Power Supply Unit which can accept 110V and 240 V ,AC at 50/60 hz. It also has a standard IEC cable input to accept international cable types if you're out side the China. Next, plug the cable into the Power Supply socket, next to the power switch. 4.7 Before connecting anything, make sure that the Duplicator i3 power switch is in the OFF position and the switch is at right voltage of your local area.



To protect the motor cable from damage during shipping, we have unplug the Z axis and X axis motor cable connector. You need to insert the connector into the socket when you start. The longest cable is for X axis. And the other 2 male connectors quite near the female connector are for Z axis motor. Just insert them.





Last, open up your WANHAO filament(not included in the printer box) and mount them on the Spool holder.

We do recommend to print from SD card only. If you need to update the firmware in future, locate the USB A to B cable and plug it into the USB B port on The Duplicator i3. Don't plug the other end into anything yet. For updating firmware, check [www.wanhao3dprinter.com](http://www.wanhao3dprinter.com) ----software downloading.



Guess what? You're done with initial hardware setup! Take a moment to relax and mentally prepare yourself for what lies ahead.

When you're ready to flip the switch and make your first prints, head to the next step, **the First Run Experience.**

REV.B. changes

1. Adding the damper pad.
2. Folding packing.