



# 3D PRINTER

DATE: 01/11/18  
PAGES: 6

FILE NAME: QQD08016.doc  
REVISION : A

TITLE: D7 Box troubleshooting

INITIATE BY: Mikey  
APPROVED BY: Gary Chen

## 1.0 Purpose

This file is a guidance for troubleshooting Box if it does not reboot or freezes.

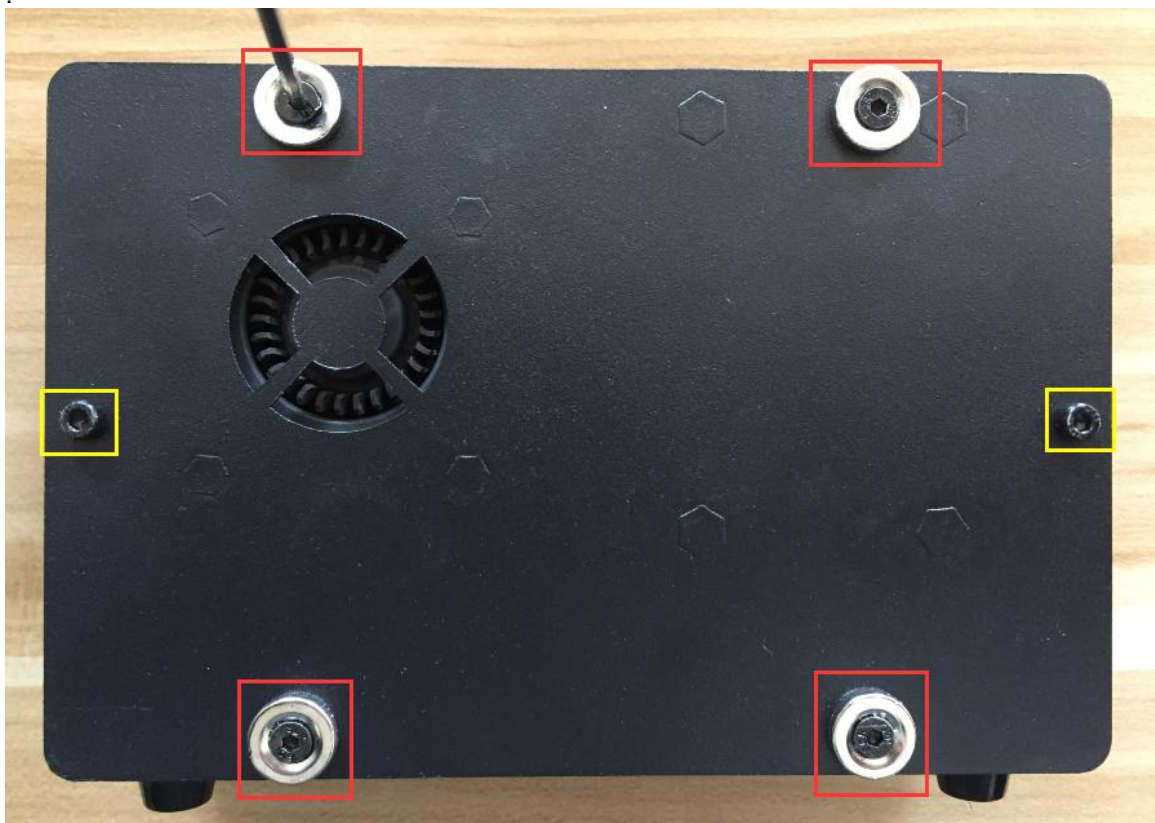
## 2.0 Scope

This document covers D7 Box

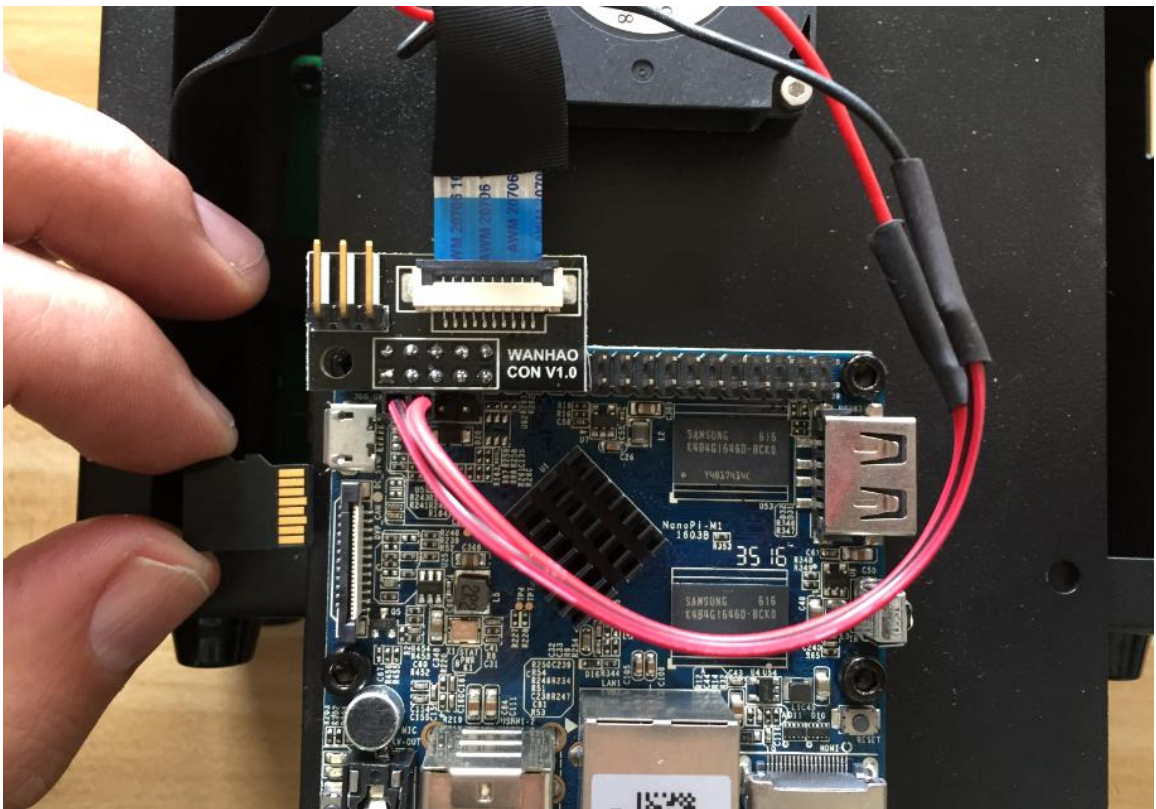
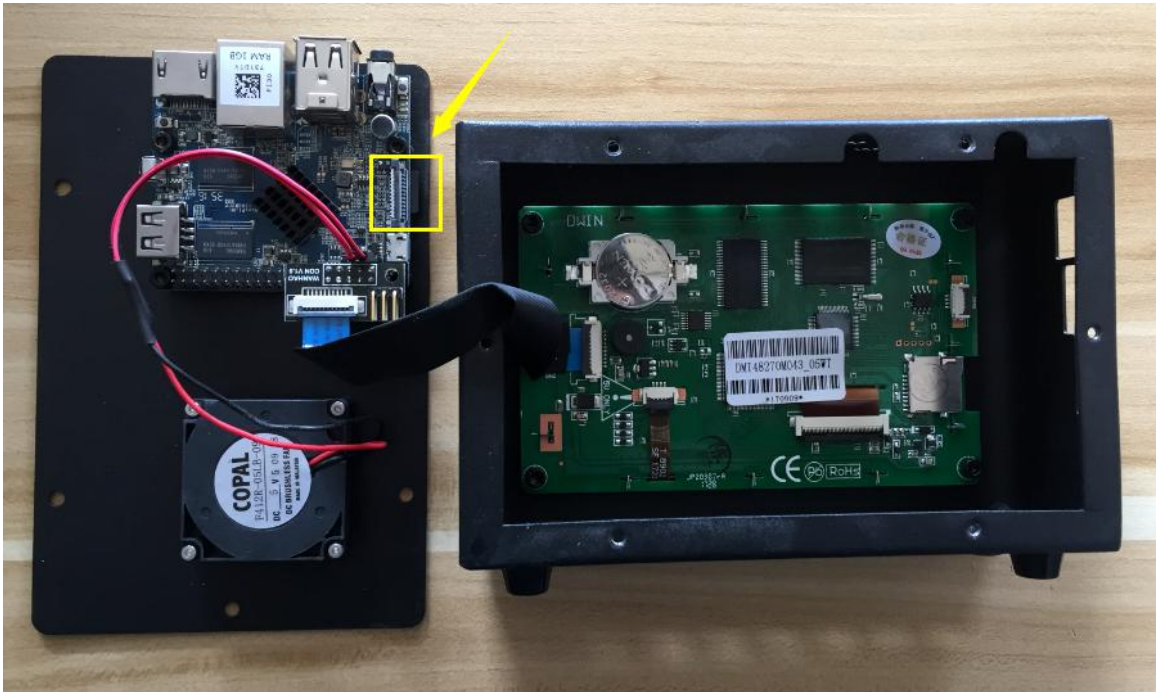
## 3.0 Resetting TF card

If the box does not freezes or stops middle of printing open the back cover and reset the TF card on the board.

3.1 Unscrew four screws and magnets and two bolts on the back of the cover



3.1 Take out the mini SD card from SD card slot and insert it again. (Reset the mini SD card)



#### 4.0 Rewrite image into SD card again

If you already reset the TF card and the issue still remains then you should format the card and rewrite the image following the process below:

4.1 Go to the link below and download, Win32 Disk Imager

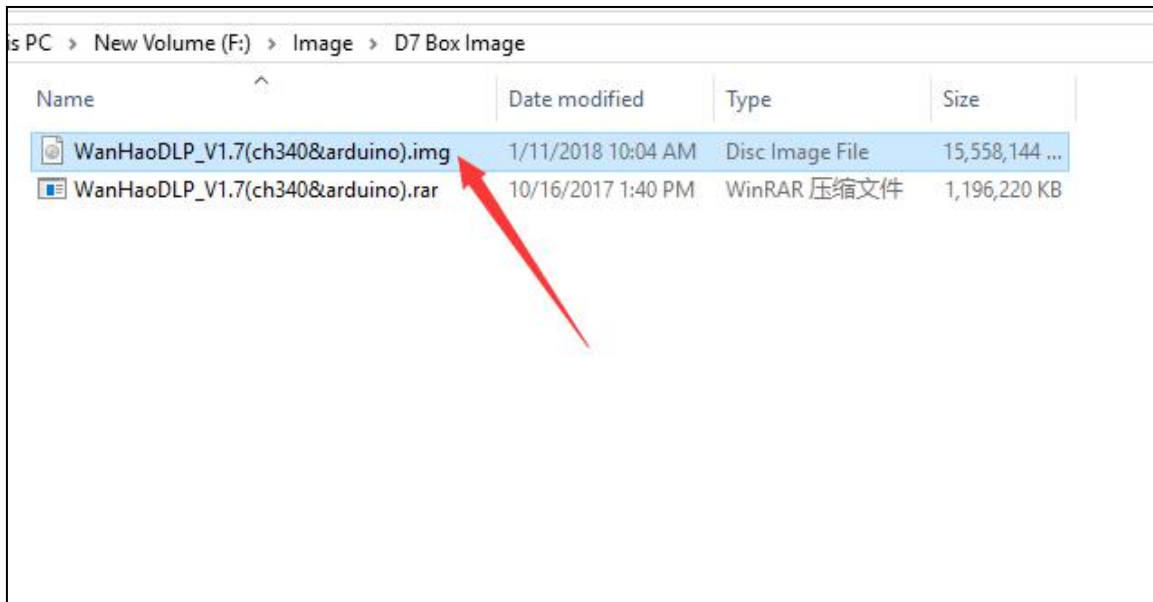


<https://sourceforge.net/projects/win32diskimager/>

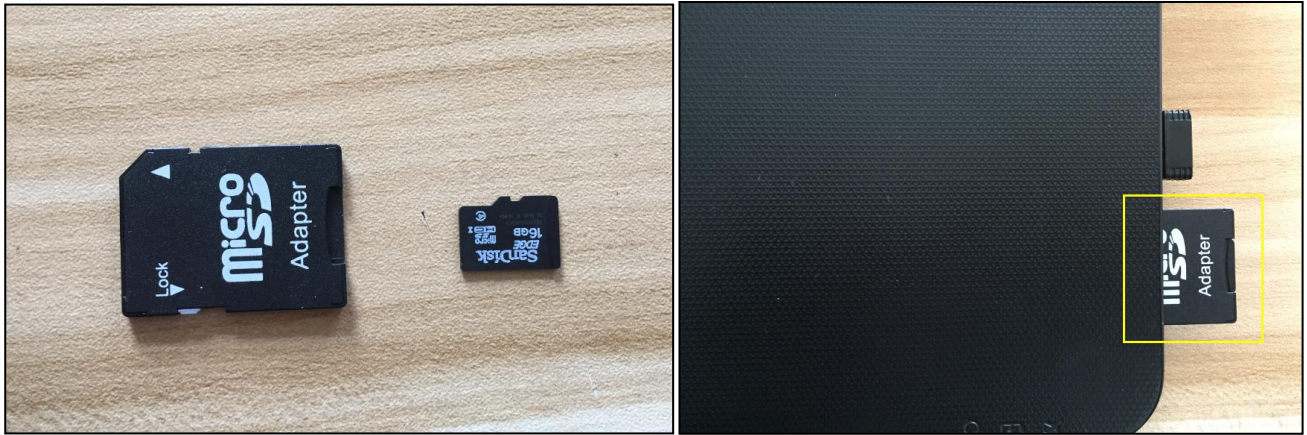
4.2 Download the box SD image from the link below:

[https://www.dropbox.com/s/cy7ye7xbmq6xj53/WanHaoDLP\\_V1.7%28ch340%26arduino%29.rar?dl=0](https://www.dropbox.com/s/cy7ye7xbmq6xj53/WanHaoDLP_V1.7%28ch340%26arduino%29.rar?dl=0)

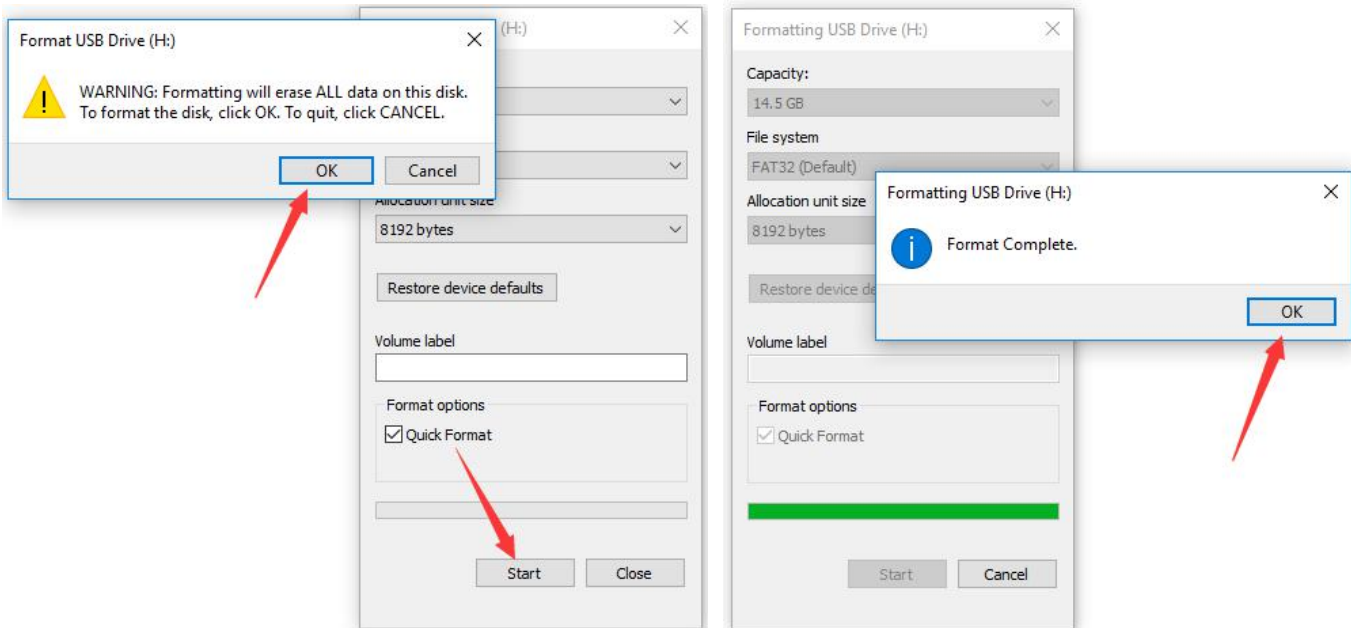
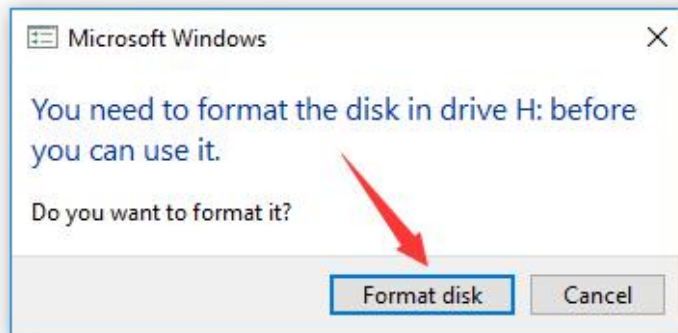
4.3 Go to the folder you've downloaded the file and extract it out.



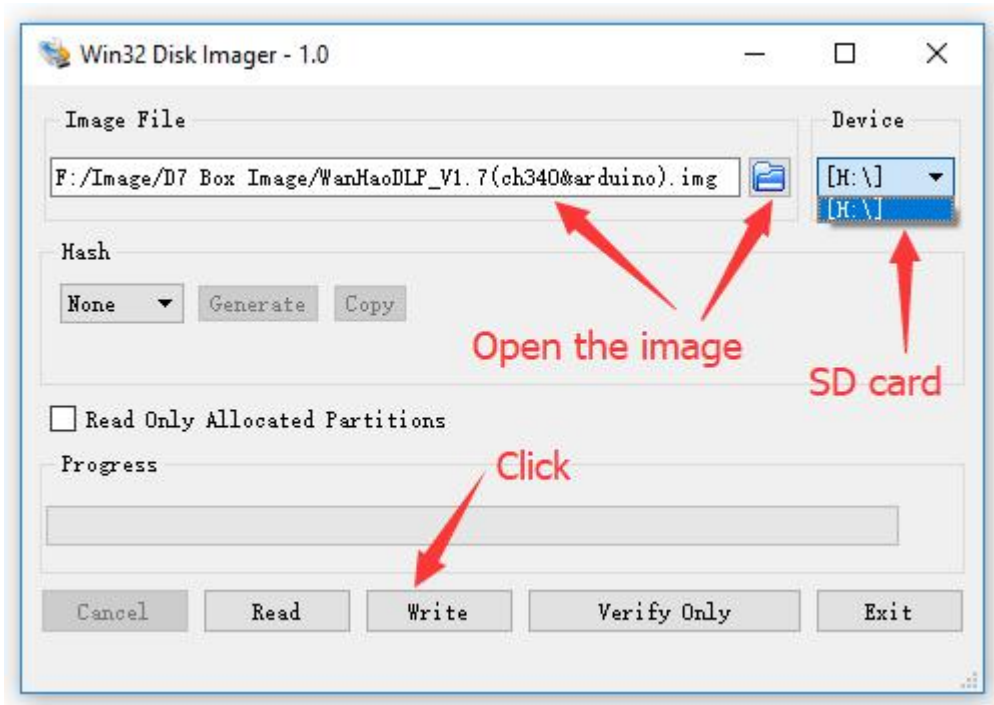
4.4 Put your current SD card or any other mini SD card higher than 16GB inside a adapter and put it in SD card slot on your PC.



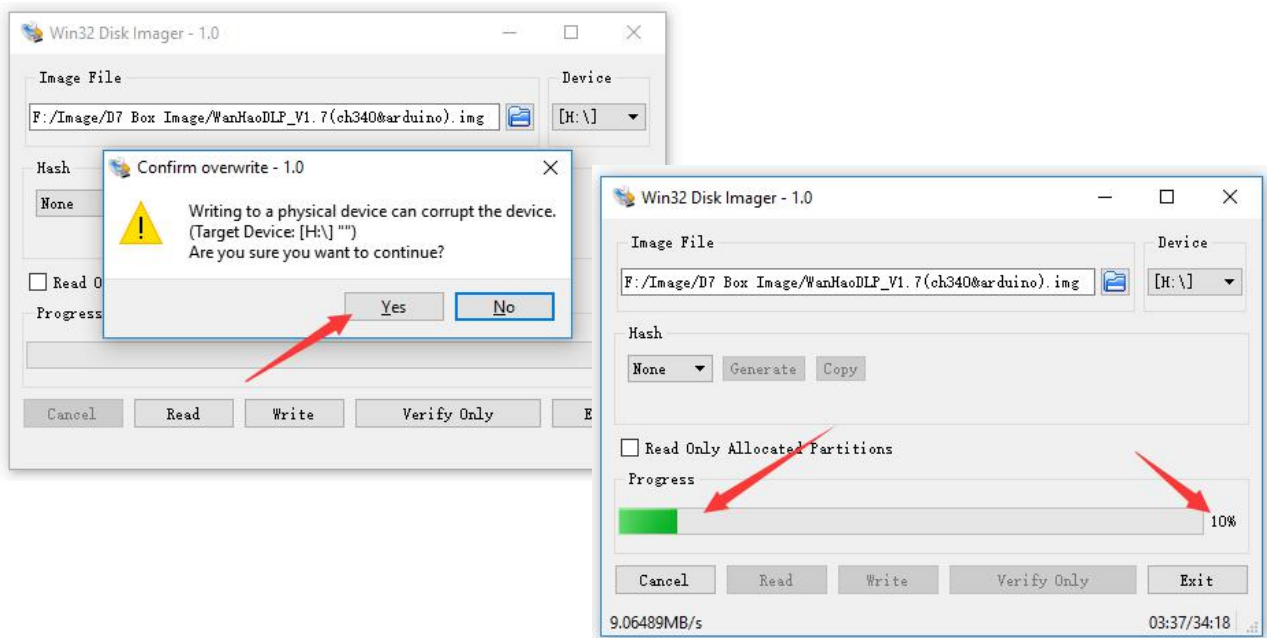
4.5 System may asks you to format the disk, proceed click on format disk.



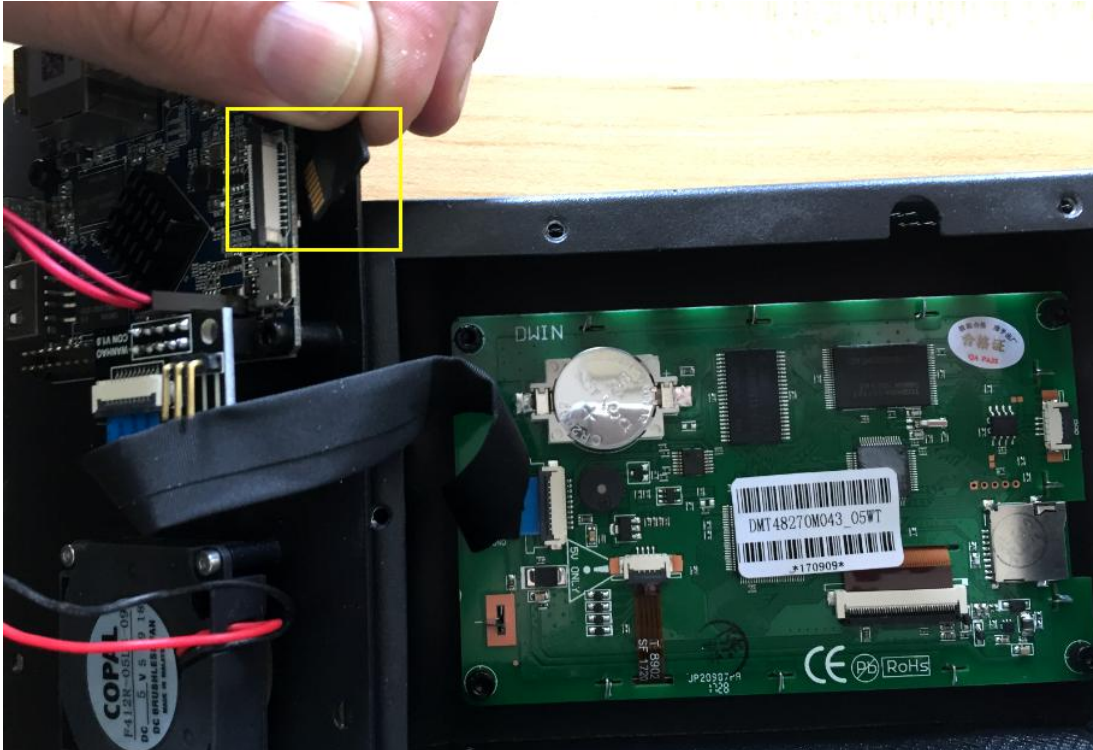
4.6 Open Win32 Disk Imager and open the image from where is it located and also make sure you choose the right driver to read the image on.



Proceed and click on yes and the image starts to writing on the SD card. Wait until Writing is successful and complete then click and OK.



4.7 Safely remove the SD card from PC and put it back on the board's SD card slot.



4.7 Put the cover, screws and magnets back and start using box again..

