 3D PRINTER	DATE: 28/10/2016 FILE NAME: OQD0106001.doc PAGES: 4 REVISION : D
TITLE: How to flash the firmware to i3plus motherboard and LCD display?	INITIATE BY: Manolo Chen APPROVED BY: Gary Chen

1.0 Purpose

I3plus firmware need to flash the mother board and LED display separately. This instruction would guide you to flash both of them.

2.0 Scope

This document establishes the specifications required for Duplicator i3plus

3.0 Tools required.


M3 hex wrench, USB A-B cable(inside printer repairing bag), TF card.

4.0 Flashing procedure


4.1 Download the firmware.

You can down load the firmware from the following link

4.1.1 **firmware DOWLOAD for motherboard**

 I3_plus_V2.1.1.hex

4.1.2 **i3_plus_LCD_display_firmware_DOWNLOAD for LCD**

 LCD_display_Firmware

4.2 Decompress the file LCD_display_Firmware

Note: don't change the file name.

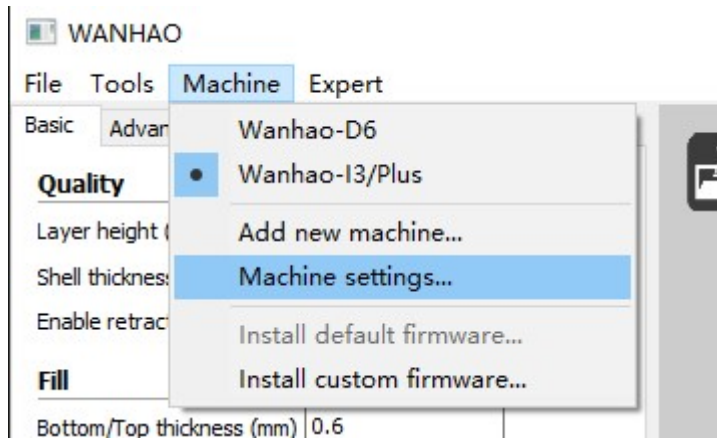
 27.进度条
 DWIN_SET
 ICON
 image
 LCD_DISPLAY-FIRMWARE2.1.7
 TFT
 DWIN_SET
 DWprj.hmi
 DWprj.tft

4.3 Update the motherboard firmware.

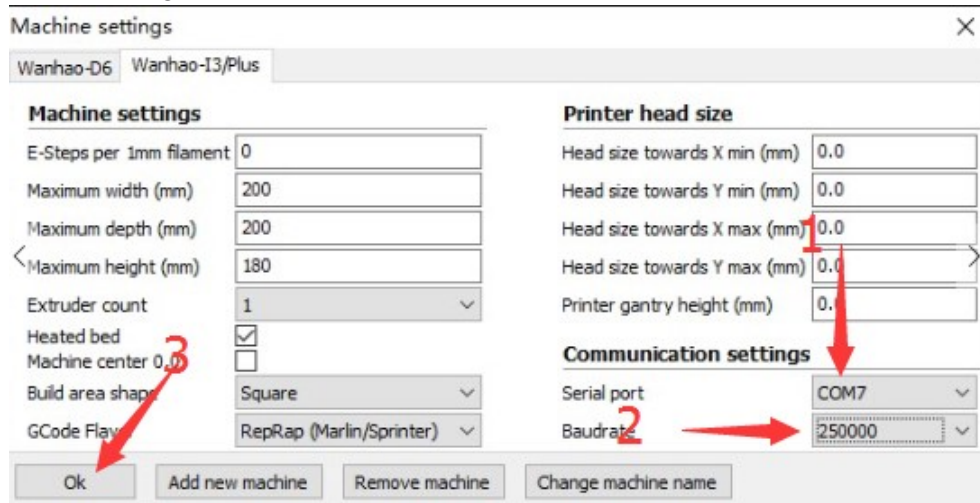
4.3.1 Turn on the printer

Connect the printer with the computer through the USB cable.The computer would install the driver automatically.

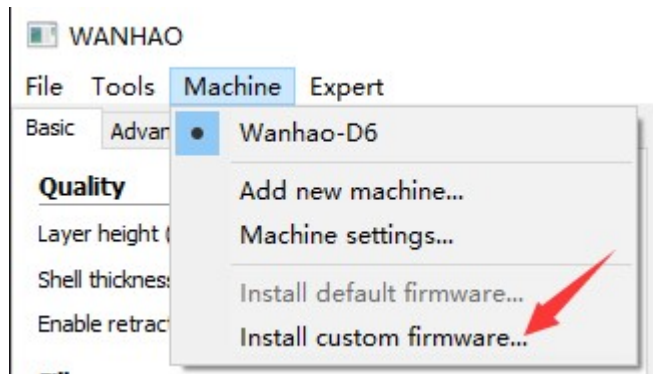
4.3.2 Open CURA---Machine---Machine settings



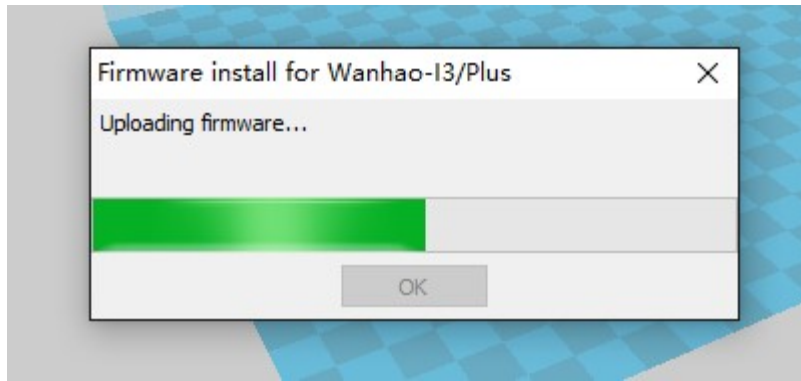
Choose the current Serial port
 Choose the baudrate **250000**
 Then Press OK



4.3.3 Navigate to Machine—Install custom firmware—i3_plus-V2.1.7.hex



It takes 1 minute to finish updating.



4.4. Update the LCD display firmware

4.4.1 Format the TF card(Micro SD card). **Note: file system: FAT32, Assign sector size 4096 byte**



4.4.2 Copy the all the file to TF card (The screen support Max 8G TF card)



4.4.3 Turn off printer and Un-screw the 2 M6 bolt near the screen.



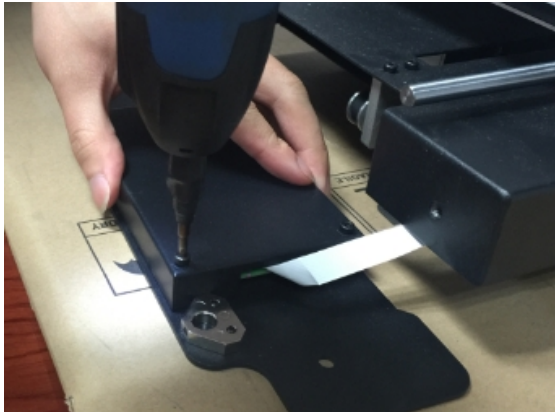
4.4.4. To loose the 2 M3 set screw by 1.5mm hex wrench.



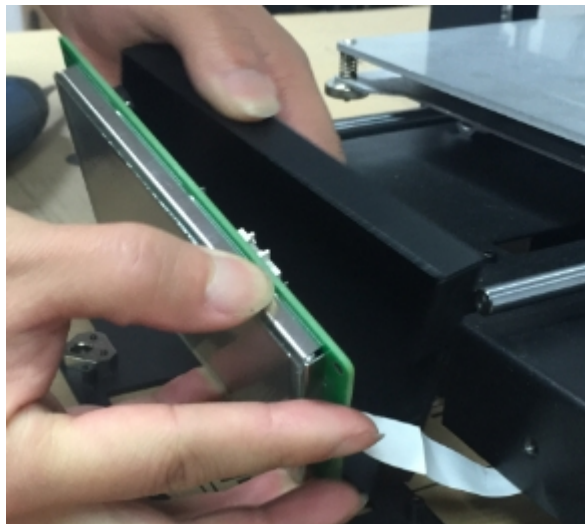
4.4.5 To dis-assemble the front panel gently.



4.4.6. To uncover the 4 M3 screws.



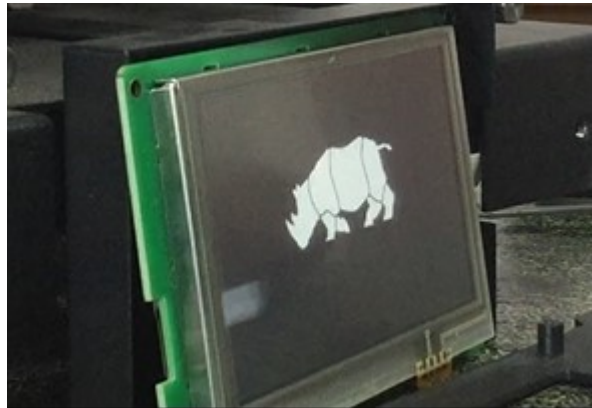
4.4.7. To move the screen board from the case.



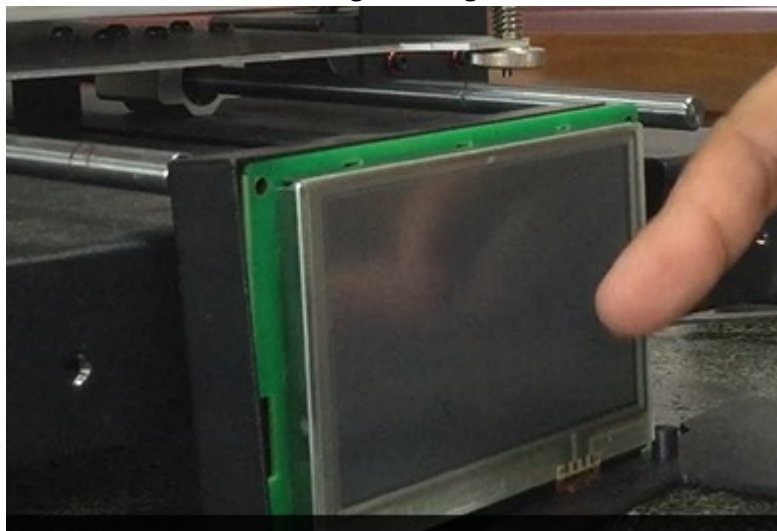
4.4.8. Insert the micro SD card into the card slot.



4.4.9. Turn on the printer. The printer would start flashing automatically. It takes 2.5 minutes to flash the LCD board. Then the screen would turn black! Turn off the printer and unplug the micro SD card.



Turn black after finishing flashing



4.5.10 Re-assembly the front panel vise verse

5.0 Revisions

A – Initiate: 6/7/16 by: Manolo

B-Add more detail installation pic. 3 12/7/16

C- Add (The screen support Max 8G TF card) 12/7/16

D- Correct the 4.4.2 “ Copy DWIN_SET” to “ all the file”

