 3D PRINTER	DATE: 12/04/17 PAGES: 5	FILE NAME: OQD08013.doc REVISION : A
TITLE: Troubleshooting LCD Screen and display resolution	INITIATE BY: Mikey Omrani APPROVED BY: Manolo Chen	

1.0 Purpose

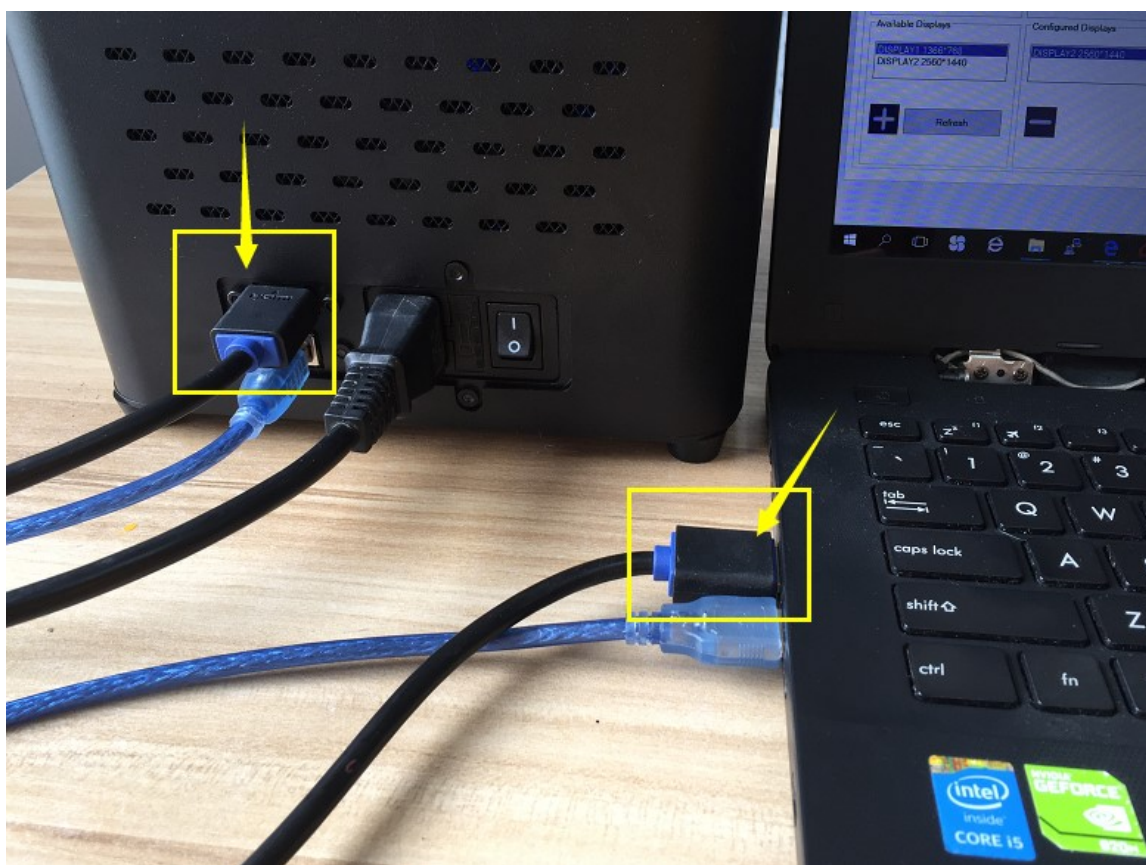
This step by step guide walk you through to troubleshoot D7 LCD screen and find the root of the issue or defective part.

2.0 Scope

This document covers Duplicator 7


3.0 Connections & Setting

3.1 HDMI connection



3.2 PC and Software Setting

First make sure you have the all setting right on your PC



Identify Detect

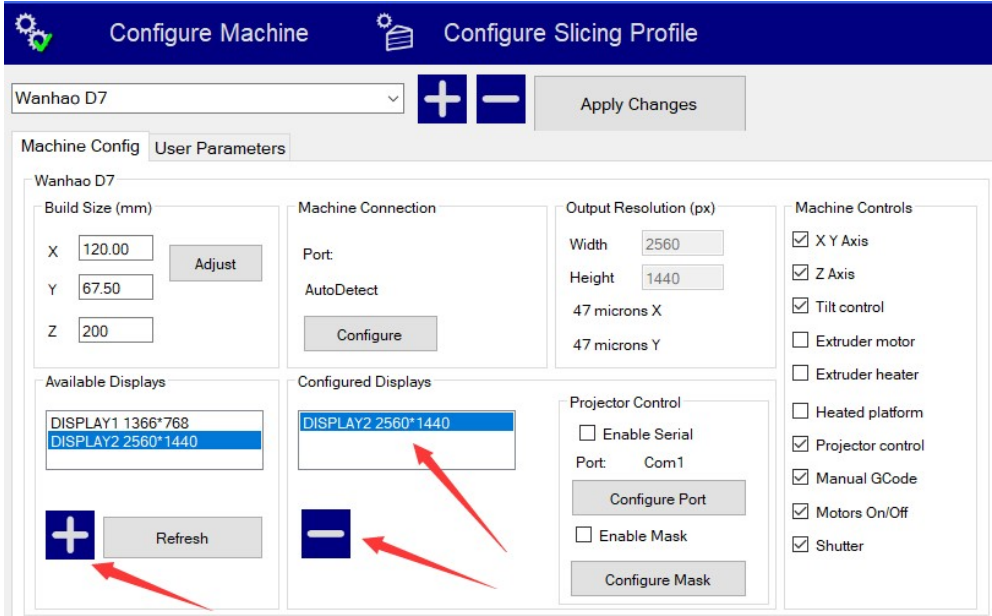
Resolution
2560 × 1440 (Recommended) ▼

Orientation
Landscape (flipped) ▼

Multiple displays
Multiple displays
Extend these displays ▼

3.3 Remove Display

Before start any hardware troubleshooting once remove the configured display from the box and add it again and click on Apply changes. Close the software and open it again and see if the issue solves.



Configure Machine Configure Slicing Profile

Wanhao D7 + - Apply Changes

Machine Config User Parameters

Wanhao D7

Build Size (mm)
X 120.00 Adjust
Y 67.50
Z 200

Machine Connection
Port:
AutoDetect
Configure

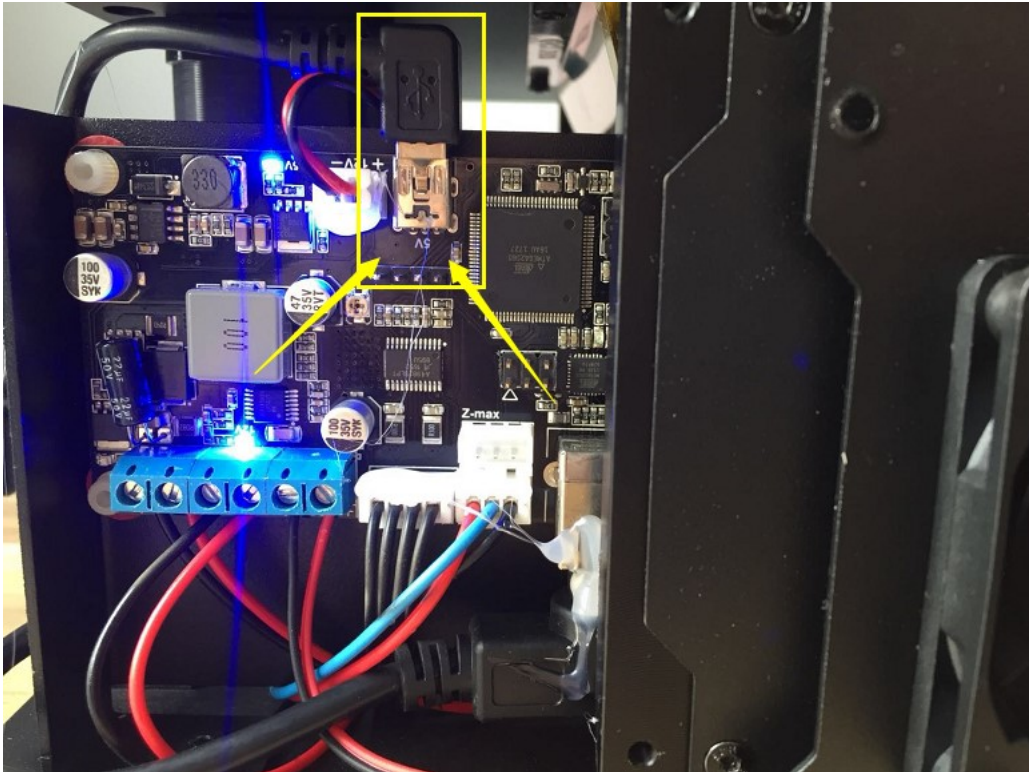
Output Resolution (px)
Width 2560
Height 1440
47 microns X
47 microns Y

Machine Controls
☒ X Y Axis
☒ Z Axis
☒ Tilt control
☐ Extruder motor
☐ Extruder heater
☐ Heated platform
☒ Projector control
☒ Manual GCode
☒ Motors On/Off
☒ Shutter

Available Displays
DISPLAY1 1366*768
DISPLAY2 2560*1440
+ Refresh

Configured Displays
DISPLAY2 2560*1440
-
Projector Control
☐ Enable Serial
Port: Com1
Configure Port
☐ Enable Mask
Configure Mask

4- Make sure the 5V mini USB powers up the LCD controller board.



5- Check LCD controller board, bypassing HDMI cable

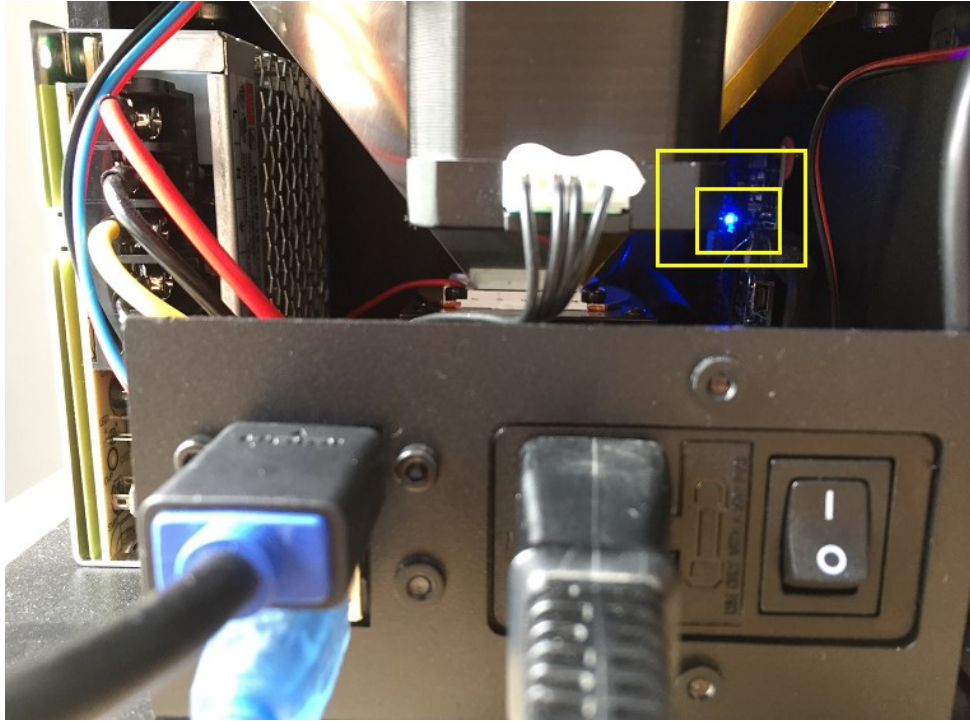
5.1- Open the back cover of the printer and check the state of the light on the LCD controller board and splitter board

There always will be a two states:

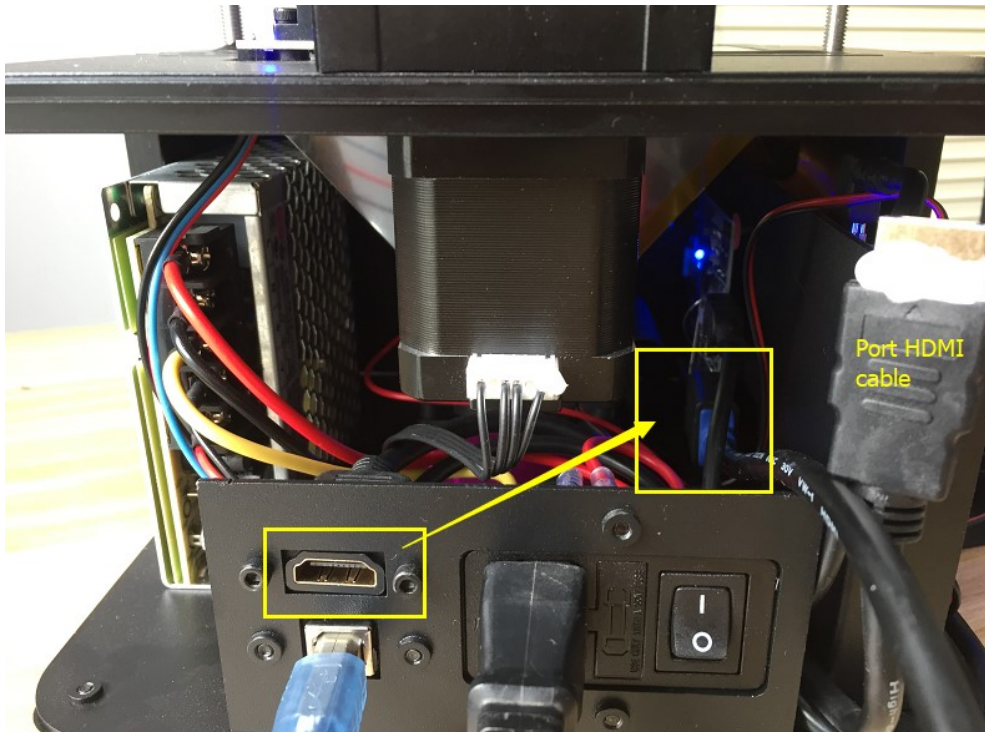
- 1- The light on the board is Solid. (This is right)
- 2- The light on the board is blinking. (This is wrong)

Basically blinking light defines a bad single from PC to printer that might be caused from a defective HDMI cable or LCD board itself.

So when the HDMI cable is not connected to HDMI port the light starts to blink continuously.



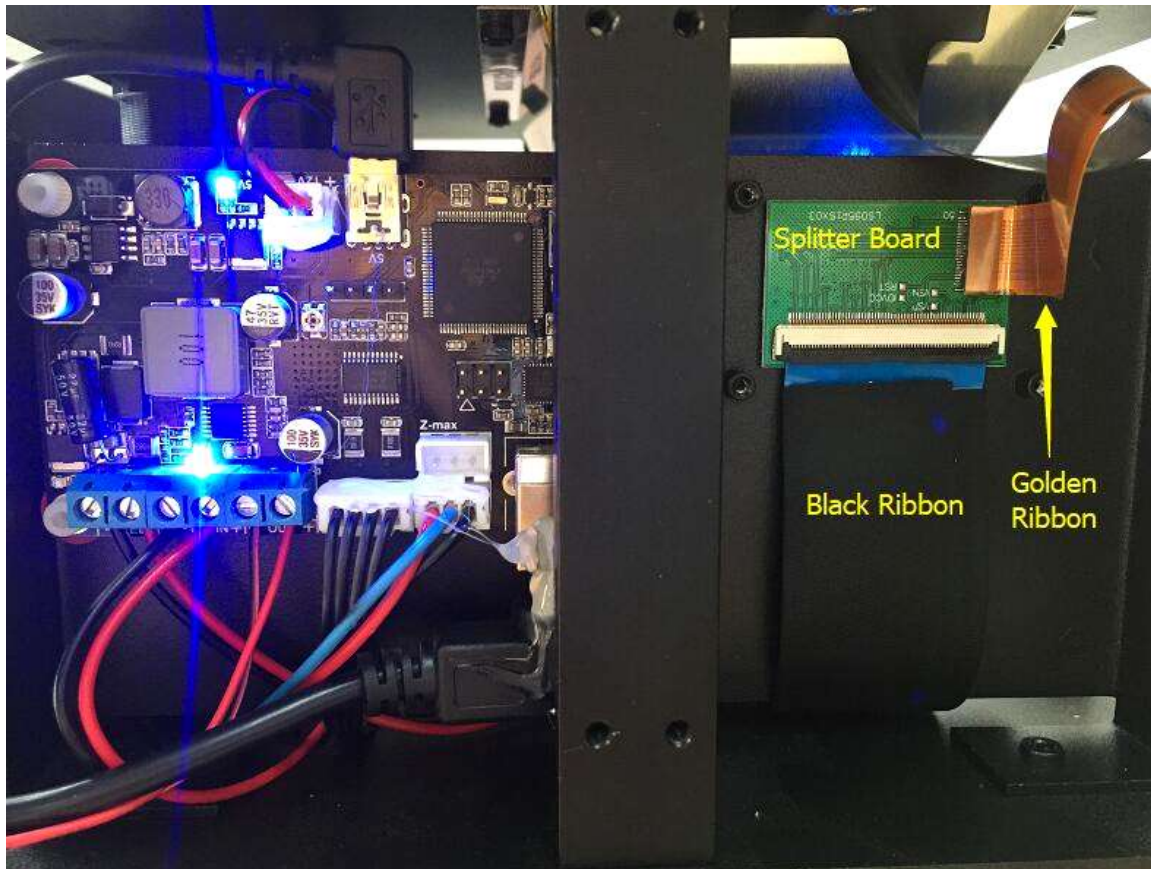
If the HDMI cable is connected and the light still blinking then directly connect the long HDMI cable to the port and avoid the internal port.



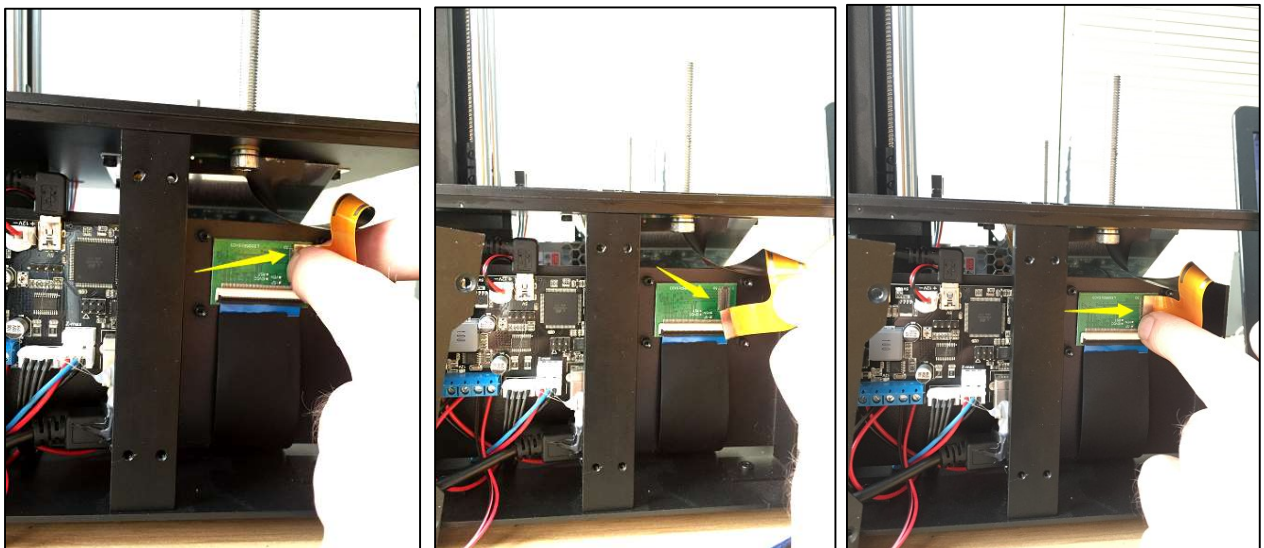
After bypassing the Long HDMI cable if the light is solid that means the internal HDMI cable might be defective and need to be replace.
If after bypassing the light still blinks the LCD board might be defective and should be replaced.

5- Splitter board and LCD screen ribbon

If the bypassing ensure that the HDMI cable and LCD board are not defective the next step is resetting LCD Golden ribbon cable



5.1- Put your two fingers gently and remove the ribbon cable from its place and put it back. If the image still does not display splitter board or LCD screen itself should be replaced.



Note: Resetting Ribbon cable also would fixed sometimes the screen flickering issue.

6.0 Note

6.1 initiate by Mikey on 4th Dec 2018